

Tube

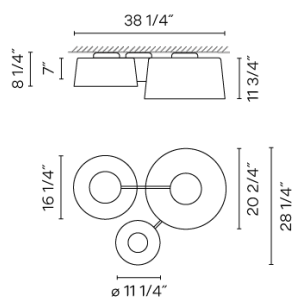
VIBIA

6115

Design By Ichiro Iwasaki

Ceiling lamp with three shades of different sizes. Featuring a curved sheet aluminum shade lending a visual and material lightweight quality.

Spec sheet



Finish

- 71 Grey L2, Grey M1, Black Grey
NCS S 2500-N, S 4500-N, S 7000-N
- 10 White
Tube NCS S 0300-N

LED color temperature 2700 K

Dimming 0-10V
Optional DALI or Lutron ECO
Min. Quantity, upcharge and extra lead time apply

Installation type Surface mounted

Materials LED support: Aluminum
Canopy: Steel

Light source 1 x LED PLATE 13.5W 700mA
2 x LED PLATE 20W 700mA
A+

LED CRI>90 7540 lm 138
2700 K

Driver CC - Constant Current 700
120-277 V 50/60 HZ

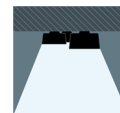
Dimmable LED IP20 Multi-volt

UL Dry Location 50-60Hz 0-10V

Lighting effect

General Lighting

Lamp for general lighting that equally distributes the light in all directions.



Photometric Data

Efficiency	47.17 lm/W
Coordination System	CG
Total Flux	3045.28 lm
Maximum Value	1188.20 cd

Application Ceiling Fixtures

Packaging 2 Box
14.41 m x 27.91 m x 27.91 m
Gross weight 37.89
Net weight 10.35
Vol. 7.5857

VIBIA, INC.

USA & CANADA
272 Fernwood Ave. Edison, NJ 08837. USA
Phone 732 417 1700 sales@vibia.com www.vibia.com/us/usa

HEADQUARTERS
Progrés 4-6. 08850 Gavà
(Barcelona - Spain)