

# Empty

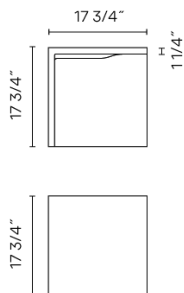
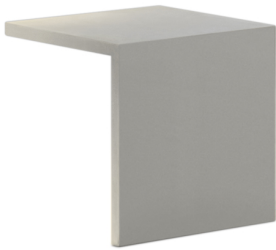
VIBIA

4125

Design By Xuclà

EMPTY - designed by Xuclà, is an outdoor floor lamp and furnishing, integrated matter and light into a single sculptural entity. After dark, EMPTY transforms its austere form through the use of an imperceptible LED light source, creating illuminated seating, tables, and sculptural path lights with an inviting, indirect light.

## Spec sheet



<b>Finish</b>	18 Lacquered concrete grey RAL 7035
<b>LED color temperature</b>	3500 K
<b>Dimming</b>	On/ Off
<b>Installation type</b>	Surface mounted

<b>Materials</b>	Body: Polymer Concrete
<b>Light source</b>	2 x LED STRIP 24V 8.6W A
<b>LED</b>	CRI>80 1247 lm 72.5 3500 K
<b>Driver</b>	CV - Constant Voltage [object Object] 120-277 V 50/60 HZ



<b>Application</b>	Outdoor
<b>Packaging</b>	1 Box 22.05 m x 22.05 m x 22.2 m Gross weight 91.63 Net weight 82.47 Vol. 6.2437

### Lighting effect

#### General Lighting

Outdoor lighting



### Photometric Data

<b>Efficiency</b>	53.22%
<b>Coordination System</b>	CG
<b>Total Flux</b>	1247.24
<b>Maximum Value</b>	245.05

VIBIA, INC.

USA & CANADA  
272 Fernwood Ave. Edison, NJ 08837. USA  
Phone 732 417 1700 sales@vibia.com www.vibia.com/us/usa

HEADQUARTERS  
Progrés 4-6. 08850 Gavà  
(Barcelona - Spain)