

# Array

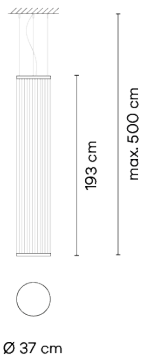
VIBIA

1810




Design By Umut Yamac

The large scale hanging cylindrical silhouette Array lamp wraps around the space rather than dominating it thanks to its spacious format of filaments that create a transparency through the volume it occupies.

## Model Sheet



**Optional: Extra cable length**  
Min. quantity, upcharge and extra lead time apply [EN]

<b>Finish</b>	 37 Terra Red NCS S 4040-Y70R
	 47 Green L1 NCS S 4005-G80Y
	 24 Beige M1 NCS S 2005-Y50R
<b>LED temperature color</b>	2700 K
<b>Dimming</b>	Casambi / 1-10V / Push; DALI
<b>Installation type</b>	Built-in S / Remote Micro / Surface Canopy

**Materials** Upper ring: Aluminum  
Bottom ring: Brass  
Diffuser: PC- Polycarbonate  
Threads: PES FR

**Light source** 1 x LED STRIP 22W 48V



**LED** CRI>90 2662 lm 121  
2700 K

**Driver** Constant Voltage 90~305 V V  
50~60 Hz HZ



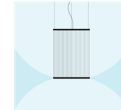
**Application** Hanging lamps

**Packaging** 1 Box  
0.12 m x 0.62 m x 0.62 m  
Gross weight 7,6  
Net weight 5,4  
Vol. 0.0461

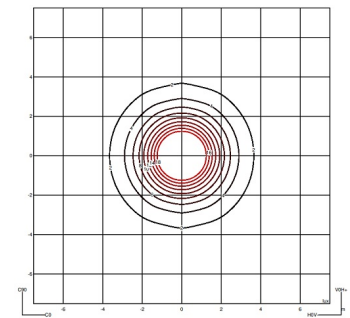
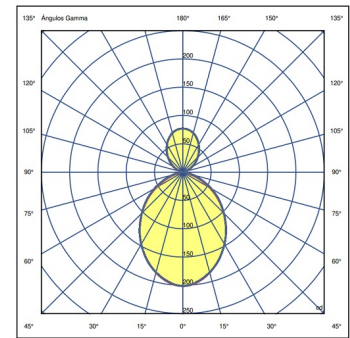
### Lighting effect

#### General lighting

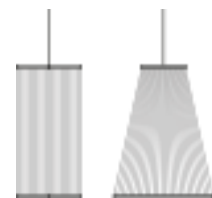
Lamp for general lighting that equally distributes the light in all directions.



### Photometric Data



### Other Applications



All of our products come with a five-year warranty. Check our legal terms at [www.vibia.com/warranty](http://www.vibia.com/warranty)

Vibia Lighting, S.L.U.

Office / Oficina  
Progrés 4-6. 08850 Gavà. Barcelona, Spain.

International T +34 934 796 971  
Spain / Portugal T +34 934 796 970

customer.service@vibia.com  
vibia.com