

# Array

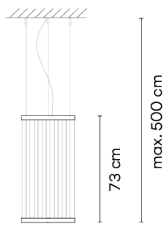
## 1800

Design By Umut Yamac

The Array pendant lamp includes a series of technical filaments that are pulled taut between two rings through which the light rises creating a colour gradient. The cylindrical shape and intimate size make it perfect for small scale spaces.

# VIBIA

## Model Sheet



Ø 37 cm

**Optional: Extra cable length**  
Min. quantity, upcharge and extra lead time apply [EN]

**Finish**

- 24 Beige M1  
NCS S 2005-Y50R
- 47 Green L1  
NCS S 4005-G80Y
- 37 Terra Red  
NCS S 4040-Y70R

**LED temperature color** 2700 K

**Dimming** Casambi / Push; DALI / 1-10V

**Installation type** Surface Canopy / Remote Micro / Built-in S

**Materials** Upper ring: Aluminum  
Bottom ring: Brass  
Diffuser: PC- Polycarbonate  
Threads: PES FR

**Light source** 1 x LED STRIP 22W 48V



**LED** CRI>90 2662 lm 121  
2700 K

**Driver** Constant Voltage 90~305 V V  
50~60 Hz HZ

Dimmable IP20 Multi-volt

50-60Hz 1-10V

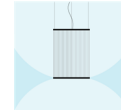
**Application** Hanging lamps

**Packaging** 1 Box  
0.12 m x 0.62 m x 0.62 m  
Gross weight 7  
Net weight 4.8  
Vol. 0.0461

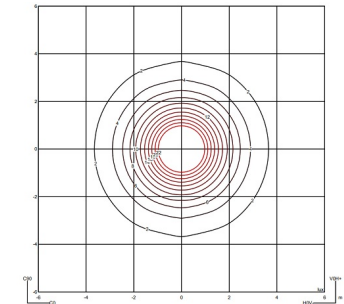
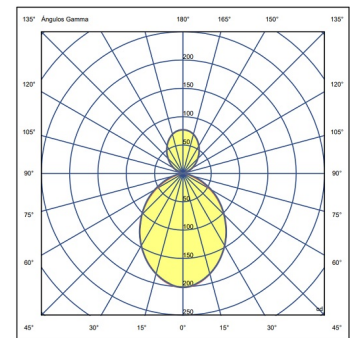
### Lighting effect

#### General lighting

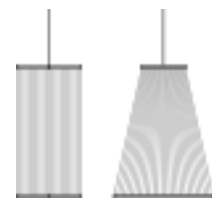
Lamp for general lighting that equally distributes the light in all directions.



### Photometric Data



### Other Applications



All of our products come with a five-year warranty. Check our legal terms at [www.vibia.com/warranty](http://www.vibia.com/warranty)

Vibia Lighting, S.L.U.

Office / Oficina  
Progrés 4-6. 08850 Gavà. Barcelona, Spain.

International T +34 934 796 971  
Spain / Portugal T +34 934 796 970

customer.service@vibia.com  
vibia.com