

Polar Table

Designer: Pearson Lloyd  
Year: 2007

A matching side table completes the Polar system. Also designed by Pearson Lloyd and inspired by spectacular glacier formations, it features asymmetrical yet delicate lines, inherent to the poetry of the natural setting from which its shape derives. The Polar Table is an occasional table for both interior and exterior spaces. Thanks to its fresh, unique shape, it can be placed with either end up, which also changes its functional options. The ideal piece to pair with the Polar sofa system, it also marries well with other furnishings in many different settings.

Developed by Tacchini in Italy

Dimensions (cm)

Cod. 1POLU  
/1POOP



W 49 D 41 H 43 cm

CAD Files:  
3D (.dwg, .3ds)  
2D (.dwg)

Download CAD  
files at [tacchini.it/  
en/downloads](http://tacchini.it/en/downloads)

---

Materials description

Table: polypropylene stamp.

---

Finishes



T21    RAL 9005  
Black



T21    RAL 9003  
White



T22    RAL 1016  
Gloss Yellow

---

---

Materials informations



Polypropylene

Polypropylene has high features of resistance to chemical agents, can be welded and is normally used with temperatures between +5°C and +90°C. PP has low mechanical resistance to traction, bending, compression, abrasion.

---

Polypropylene    100%

---

Recyclability

All Polar Table elements are 100% recyclable when fully separated. Tacchini undertakes on-going research and development, with efforts made to introduce products which are a perfect combination of function and safety without jeopardizing the final design of the same articles. During production attempts are made to minimize noise and emission levels and to reduce rejects as far as possible. All the single materials which make up the production process, once disassembled, can be reused several times, maintaining a high quality standard.

Packaging

Polar Table element is dispatched already assembled. It is protected by tissue paper and cellophane to protect the covering from dust and direct contact with the cardboard. The product is packed in rigid cardboard boxes suitable for world export. Manufacture of the packaging observes the criteria for recovery both as recycling and energy recovery and composting.

---

Once a product reaches the end of its life cycle it has to be eliminated.

To discover more about Tacchini environmental policy please visit: [www.tacchini.it](http://www.tacchini.it)



---

Pearson Lloyd

Pearson Lloyd is one of the leading names in contemporary British design, and this multidisciplinary studio works in a wide range of sectors: from furnishing to public spaces to brand development. Established by Luke Pearson and Tom Lloyd in 1997, the studio has received numerous acknowledgements and accolades in both Europe and the United States. The British design duo write regularly for major design magazines, as well as acting as “visiting lecturers” at the École Cantonale d’Art in Lausanne.

---

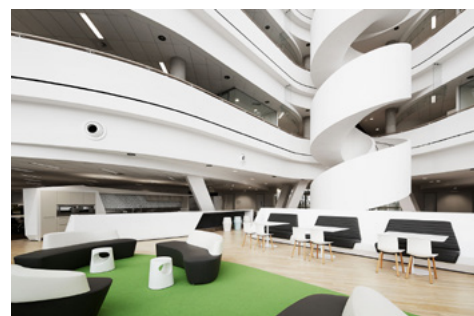
Selected projects:



Muscat International Airport  
(Muscat, Oman)



Alma Hotel  
(Barcelona, Spain)



South Australian Health and Medical  
Research Institute (Adelaide, Australia)



Bavaria Lounge, Messe München  
(Munich, Germany)



Consultancy Firm  
(Munich, Germany)