





Julep

Designer: Jonas Wagell

Organic and versatile in shape, the new Julep, by designer Jonas Wagell, is a natural extension, in both practicality and beauty, of the existing range of Julep best sellers. Updated in size, with even more distinct asymmetries, the new model looks like a chaise-longue, paired with an even larger and more enveloping round ottoman. Like the other members of the Julep family, the new chaise-longue has a light structure, thanks to the recessed base that invisibly lifts it off the floor, without sacrificing any of its magnificent elegance and style.

Developed by Tacchini in Italy  
® Registered Design

Dimensions (cm)  
Chaise-longue  
Cod. OJUL208

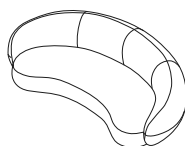
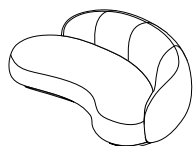
Sofa  
Cod. OJUL240

Island  
Cod. OJUL174

Armchair  
Cod. OJUL102

Ottoman  
Cod. OJULP120

Ottoman  
Cod. OJULP68



W 208 D 121 cm  
H 76 cm  
H seat 42 cm

W 240 D 126 cm  
H 75 cm  
H seat 42 cm

W 174 D 137 cm  
H 75 cm  
H seat 42 cm

W 102,5 D 87,5 cm  
H 75 cm  
H seat 42 cm

W 120 D 92 cm  
H 42 cm

W 68 D 66 cm  
H 42 cm

CAD Files:  
3D (.dwg, .3ds)  
2D (.dwg)

Download CAD  
files at [tacchini.it/en/downloads](http://tacchini.it/en/downloads)

Materials description

Internal frame: poplar and birch plywood 18 mm thick, with elastic belts.

Padding: cold foam.

Base: poplar plywood 3 mm thick covered with the same fabric of the product.

Upholstery: non removable cover. Notes: the products cannot be realized in Leather, Super Leather, Aniline Leather and Vinyl.

Suggested upholsteries



Bakul



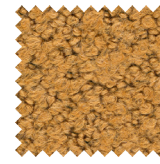
Dianella



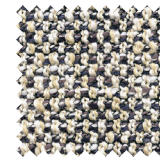
Dionea



Dulcamara



Echinacea



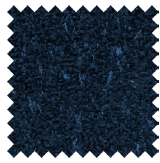
Equisetum



Eugenia



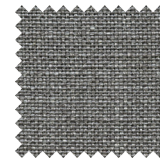
Evonimo



Laelia



Loren



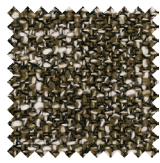
Thesium



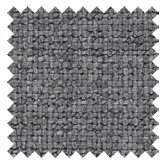
Mirabilis



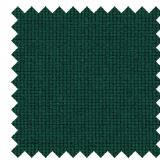
Ricinus



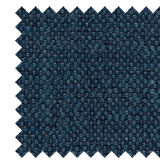
Eremurus



Escallonia



Escobaria



Schinus

#### Materials informations



Wooden structure	37%
Cold foam	34%
Upholstery	28%
Plastic	1%

#### Foam

Similar to polyurethane, foam is used for moulding products with special and organic shapes. It is a material which is highly resistant to ageing and flames. Its appearance at the edges is clean, compact. All products made with a foam structure offer a solution with extraordinary comfort.

#### Wood

Wood is a renewable raw material. All products derived from wood, such as for example plywood, have the advantage of being able to be machined more easily than wood and do not deform. The timber we use – solid or plywood – comes mainly from European and Russian forests and is seasoned to specific values of humidity with tests. Most of the structures of the products in the collection have a frame in solid pine or ash, or in beech or poplar plywood.

#### Recyclability

All Julep elements are 100% recyclable when fully separated. Tacchini undertakes on-going research and development, with efforts made to introduce products which are a perfect combination of function and safety without jeopardizing the final design of the same articles. During production attempts are made to minimize noise and emission levels and to reduce rejects as far as possible. All the single materials which make up the production process, once disassembled, can be reused several times, maintaining a high quality standard.

#### Packaging

Julep element is dispatched already assembled. It is protected by tissue paper and cellophane to protect the covering from dust and direct contact with the cardboard. The product is packed in rigid cardboard boxes suitable for world export. Manufacture of the packaging observes the criteria for recovery both as recycling and energy recovery and composting.

Once a product reaches the end of its life cycle it has to be eliminated.

To discover more about Tacchini environmental policy please visit: [www.tacchini.it](http://www.tacchini.it)



---

Jonas Wagell

Jonas Wagell is an architect and designer from Stockholm. Born in 1973, he trained as graphic artist and then specialised as an interior designer in Stockholm and New York, where he attended the Parsons School of Design. In 2008 he founded the JWDA firm which handles architecture, product design and brand management projects. Wagell is fond of creating functional items with features of simplicity and intelligence, objects which can be used and understood easily by those who choose them. The best known design from the JWDA studio is the prefabricated Mini House. For this design, in 2008, Wagell was named by Wallpaper as one of the fifty young architects worth watching. Today JWDA focuses above all on product design for Scandinavian and international brands.

---

Selected projects:



Magazzini Vivace  
Hong Kong, Hong Kong