

# Factory Stool

by Omri Revesz,  
Damian Tatangelo

stool



*description*

*material - finishing*

*size*

sizes are in centimeters

— The refinement of craftsmanship and the practicality and directness of the working factory merge, creating a series of objects that are as alive and dynamic as tools.

The collection draws from the beauty in the robust and highly functional structures, purposely created to facilitate the production process and to last through time. As such structures are simply out of necessity, honest and poetic highly adaptable forms are generated.

The typical three or four leg frame is substituted with a T frame, therefore seeming mobile and suggesting graphic applications to the space.

<sup>A</sup>RAL 9005 black varnished iron structure and satin natural brass details \*

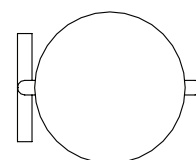


<sup>B</sup>Iron structure finishes with acid and satin natural brass details \*

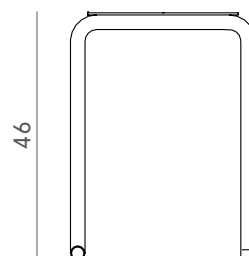


\* transparent protective paint on request

L34 W32 H46



34



46

**Category** Furniture Collection

**Gross weight** 7 kg

**Packaging size** 38 x 49 x h 38 cm

► *catalogue* p.088

► *price list* p.x