

FLOS

■ F5911030 Black

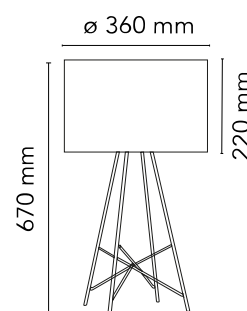
Ray Table

Designed by Rodolfo Dordoni, 2007

Halogen - 150W



Table lamp providing diffused lighting. Steel tube (10 mm diam.) structure, welded, brushed and chrome-plated. Diffuser support disk in die-cast, polished and chrome-plated Zamak alloy. White injection-molded PA6 (nylon) lamp cover. Injection-molded PC (polycarbonate) inner diffuser in 3% opal color. Transparent injection-molded elastic PVC (polyvinylchloride) feet. Lathe-shaped aluminum diffusers, painted white on the inside, and shiny white or black on the outside or gray-colored, blown and overlaid glass with glossy external finish. On the cable there is the electronic dimmer which allows the regulation of light brightness.



Are you a professional and your project needs consulting and support?

[BOOK AN APPOINTMENT](#)

Main specifications

EAN	8059607005187
Mounting	Table
Environment	Indoor dry location
Light source type	Bulb
Lamp category	Halogen
Lamp holder	E27
Iicos	HSGS
Number of heads	1
Power (W)	150

Physical

Colour	Black
Cord length (mm)	1850
Net weight (kg)	4.2
Package volume (m3)	0.1
IP	20
IP external	20

Download

[Mounting instructions](#) PDF

[Spare Parts](#) PDF

Photometric Files

[LDT / IES](#) LDT

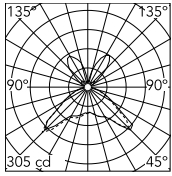
Technical Drawings

[2D](#) ZIP

[3D](#) ZIP



Schematic light drawing



The above drawing is for illustrative purposes only and refers to product code: F59110WRAY_T_150W-HL

Photometric

Lighting type	Indirect, Direct
Light distribution	Asymmetric

Electrical

Insulation class	II
Frequency (Hz)	50/60
Main voltage (Vac)	220-240
Cord length (mm)	1850
Plug type	Type C
Batteries inside	No
Charging min time	No

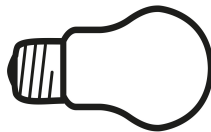
Bulbs



NOT INCLUDED

RF32563

LED Lamp 11.5W E27 220-240V
2700K A70



NOT INCLUDED

RF32564

LED Lamp 11.5W E27 220-240V
3000K A70

Spare Parts



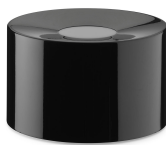
RF04487

Porcelain E27 lamp holder



RF15854

F1-T diffuser support



RF16084

F1-T diffuser



RF5912200

Kit of quantity 4 adjustable feet