

Elefy ^{JH28 & JH29}
by Jaime Hayon
2019





D: 58cm / 22.8in W: 57.5cm / 22.6in

Elefy^{JH28 & JH29} by Jaime Hayon 2019

Product category

Chair

Environment

Indoor

Material

Polypropylene, HR foam, steel tubes with powder coating or brass plating, plastic shell, fabric or leather upholstery.

Production process

The shell is made from moulded polypropylene, with the option of upholstery. The tube legs are made from Ø16 steel tubes, powder coated or brass plated.

Base finishes

Black & Brass.

Gliders

Plastic gliders installed as standard. Felt gliders are available upon request.

Shell finishes

JH28: Black, White, Soft Beige, Midnight Blue, Copper Brown.

JH29: Available in fabric, Leather and COM.

Upholstery

Fabric usage: 1.7 meters based on 140cm roll.

Leather usage: 3 square meters.

COM must be approved by &Tradition to ensure suitability for upholstery.

Dimensions

W: 57.5cm / 22.6in, D: 58cm / 22.8in,

H: 77cm / 30.3in, Seat H: 46cm / 18.1in.

Packaging dimensions

H: 83cm / 30.7in, W: 59cm / 21.9in,

D: 59cm / 21.9in.

Colli quantity

1

Weight

JH28: Product: 6.5 kg / Incl. packaging: 9.8 kg

JH29: Product: 8.3 kg / Incl. packaging: 11.6 kg

Strength, durability and safety testing

The chair is tested for strength, durability and safety according to EN 16139 Level 2 - Extreme use.

Cleaning instructions

Please download our Material Care & Cleaning instructions through www.andtradition.com

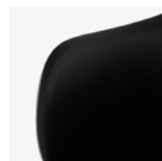
Related products



JH30 & JH31

JH32 - JH35

JH36 & JH37



Black



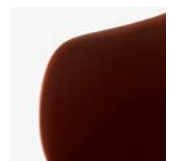
White



Soft Beige



Midnight Blue



Copper Brown



Black



Brass

&Tradition[®]