

Epic Coffee Table - Round, Ø60, Steel

Designed by GamFratesi - 2020



ITEM NUMBER

33388

DESCRIPTION

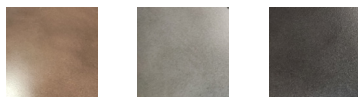
Named after the epic poems of ancient times, GamFratesi's Epic Table for GUBI is a sculptural piece of furniture inspired by Greek columns and Roman architecture. Originally made in Italy from travertine stone, the table's new variant marks the first time GamFratesi has worked with steel plates, which are galvanized, lacquered, and then treated with a series of hand-finishing processes to create a unique surface expression for each table. The table's monolithic form remains, now with an industrial expression, in which a new detail can be discovered with every use.

The collection brings personality to private settings and an intriguing sense of weight and tactility to public and hospitality spaces, where its resilient surfaces offer exceptional levels of durability. The varying heights and diameters within the Epic Table Collection mean a single monochromatic table can stand alone or be combined in dynamic clusters of varying material, height and color.

Materials & Finishes

COLOR AND FINISH

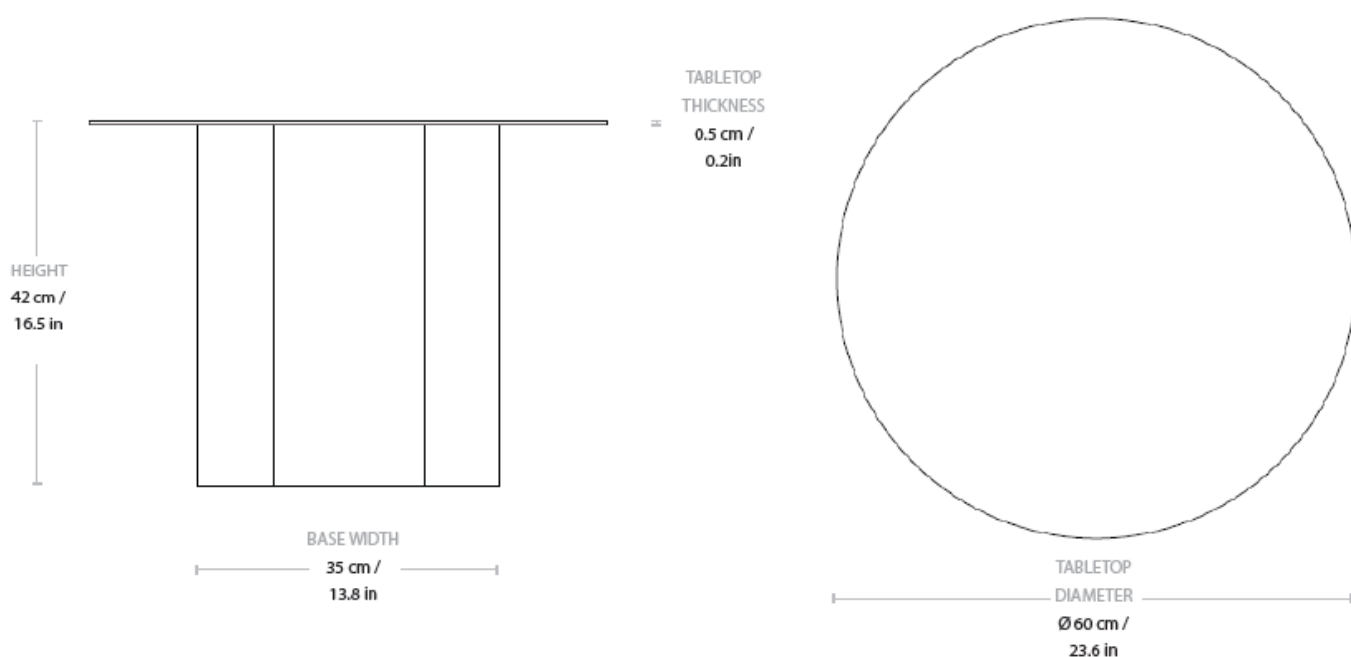
Earthy Red, Misty Gray, Midnight Black



MATERIALS

Stainless steel, Galvanized steel

Dimensions



TABLETOP DIAMETER	60 cm / 23.6 in
BASE WIDTH	35 cm / 13.8 in
HEIGHT	42 cm / 16.5 in
TABLETOP THICKNESS	0.5 cm / 0.2 in

Weight

TOTAL WEIGHT	22 kg / 48.5 lbs
BASE WEIGHT	10 kg / 22 lbs
TABLETOP WEIGHT	12 kg / 26.5 lbs

Packaging

NUMBER OF PARCELS	2
PARCEL 1	
PACKAGING LENGTH	39.4 cm / 15.5 in
PACKAGING WIDTH	31.3 cm / 12.3 in
PACKAGING HEIGHT	44.5 cm / 17.5 in
PACKAGING WEIGHT	1 kg / 2.2 lbs
PARCEL 2	
PACKAGING LENGTH	75 cm / 29.5 in
PACKAGING WIDTH	75 cm / 29.5 in
PACKAGING HEIGHT	6 cm / 2.4 in
PACKAGING WEIGHT	5.9 kg / 13 lbs
GROSS WEIGHT	50.9 kg / 112.2 lbs

SUSTAINABILITY	Parts can be separated and sorted for recycling.
----------------	--

KEY FEATURES	Emphasizing the patination of steel, the depth of color and tactility makes each piece unique.
--------------	--
